

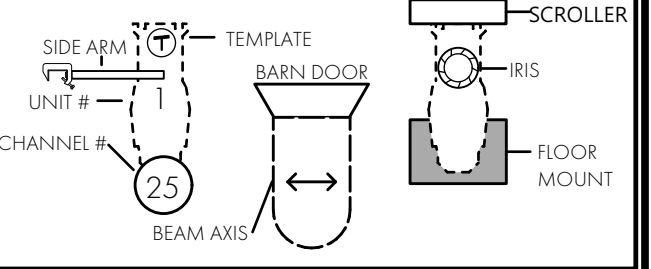
NOTES

- PROVIDE SPARE CIRCUITS AT ALL MAJOR LOCATIONS.
- DISCUSS ALL UNITS MOUNTED ON SCENERY WITH DESIGNER.
- PRE-ROTATE PAR AXES IN ORIENTATION AS SHOWN.
- NOTE CLEARANCE ON ALL AUTOMATED UNITS.
- PROVIDE EXTRA CUTS OF R132, R119, BLACKWRAP, TOP HATS, AND BARN DOORS AT FOCUS.
- USE ONLY FLOCKED TOPHATS.
- PROVIDE ADEQUATE WORK LIGHTS TO BE CONTROLLED BY STAGE MANAGEMENT.
- NO SUBSTITUTIONS WITHOUT EXPRESS DESIGNER APPROVAL.

KEY

- S4 JR 50° @ 575w
- S4 JR ZOOM @ 575w
- S4 PAR MFL @ 575w
- S4 PAR WFL @ 575w
- Chauvet Rogue R2 Wash @ 339w
- Robe ColorSpot 250 AT @ 410w
- Practical

LEGEND



DRAWING SCHEDULE

VER	DATE	DESCRIPTION
1	2/28/21	PRELIM
2	3/4/21	CJL PRELIM
3	3/9/21	SHOP PREP
4		AS BUILT

QUINN D SCHUSTER LIGHTING DESIGN
 909.725.0453 DESIGNER PHONE
 QUINN.D.SCHUSTER@GMAIL.COM
 quinnschuster.weebly.com

THIS DRAWING REPRESENTS VISUAL CONCEPTS AND STRUCTURAL SUGGESTIONS ONLY.

IT DOES NOT REPLACE THE KNOWLEDGE AND ADVICE OF LICENSED STRUCTURAL ENGINEER. THE DESIGNER IS ENCOURAGED TO DETERMINE THE STRUCTURAL OR ELECTRICAL APPROPRIATENESS OF THE DESIGN AND WILL NOT ASSUME LIABILITY FOR IMPROPER ENGINEERING, CONSTRUCTION, HANDLING, OR USE OF EQUIPMENT.
 ALL MATERIALS AND CONSTRUCTION MUST COMPLY WITH THE MOST STRINGENT APPLICABLE FEDERAL AND LOCAL FIRE, SAFETY, ENERGY, AND ENVIRONMENTAL CODES.

PRODUCED BY: ILLINOIS THEATRE
 DIRECTOR: AMBER SCHULTZ
 SCENERY BY: KAT BLAKESLEE
 LIGHTING BY: QUINN D SCHUSTER
 COSTUMES BY: KELSEA ANDRADE
 SOUND BY: JODIE OLIVIA WERNER
 PRODUCTION ELECTRICIAN: CONNER JONES
 TECHNICAL DIRECTOR: EMILY BAKER

THE HEIST

A THEATRICAL ESCAPE ROOM



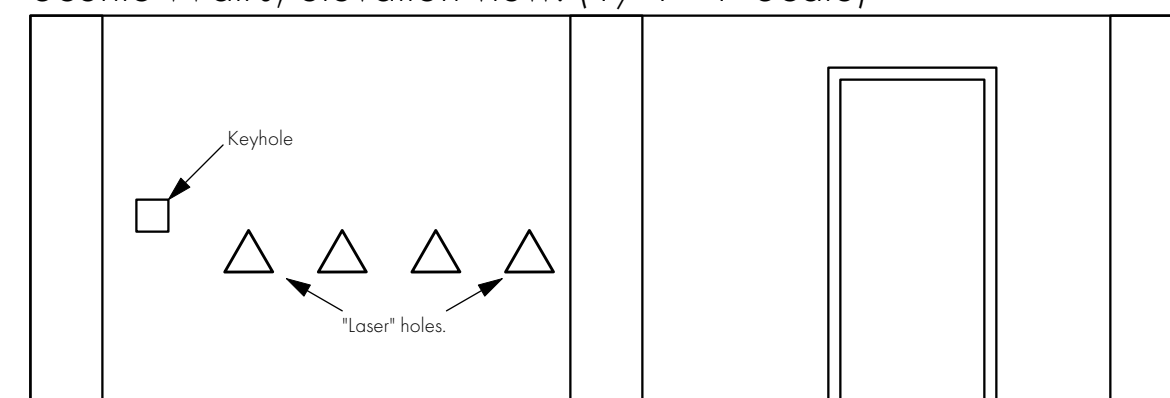
KRANNERT CENTER STUDIO THEATRE
 URBANA ILLINOIS

DECK PLOT

SCALE: 1/4"=1'-0" EXCEPT WHERE NOTED

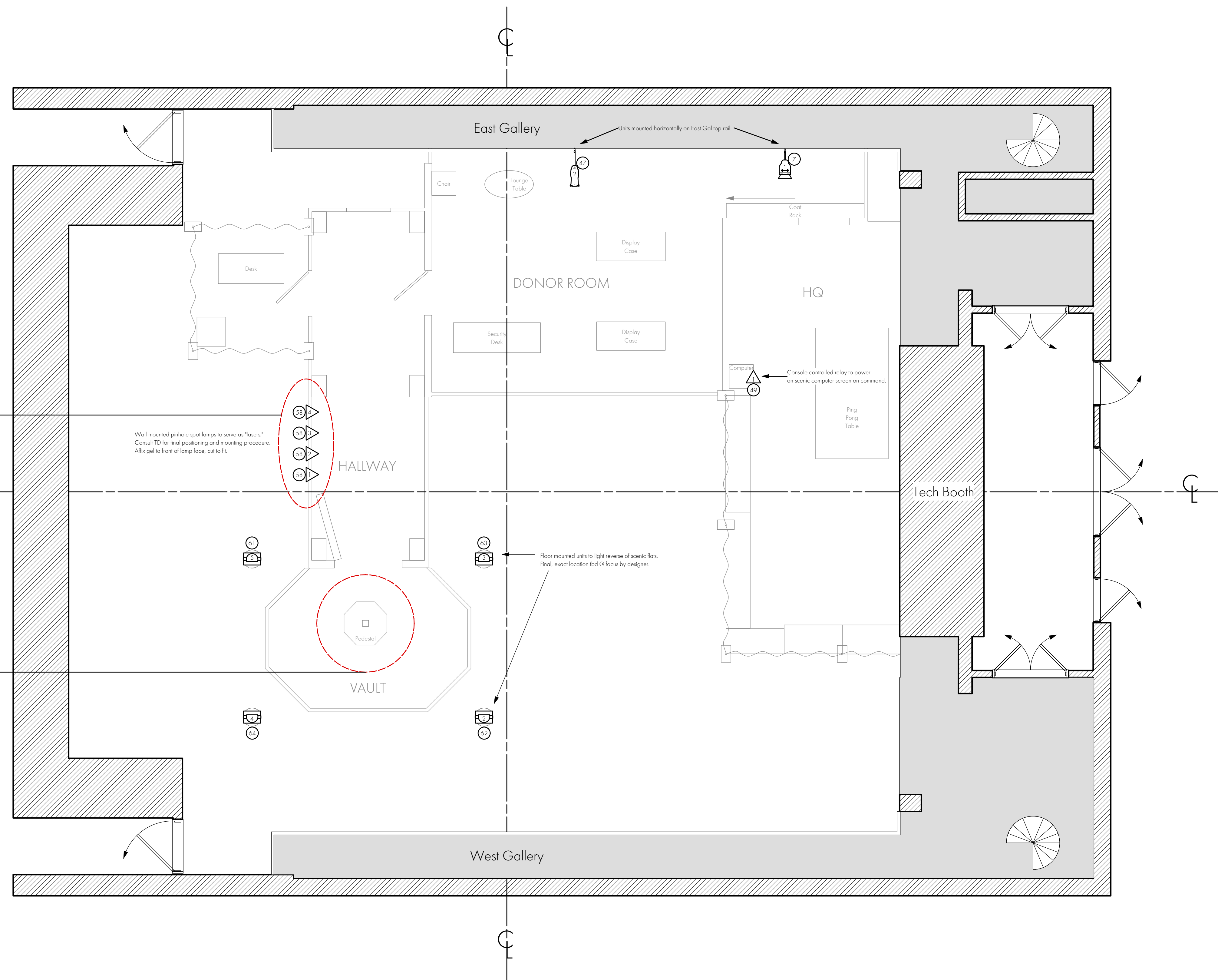
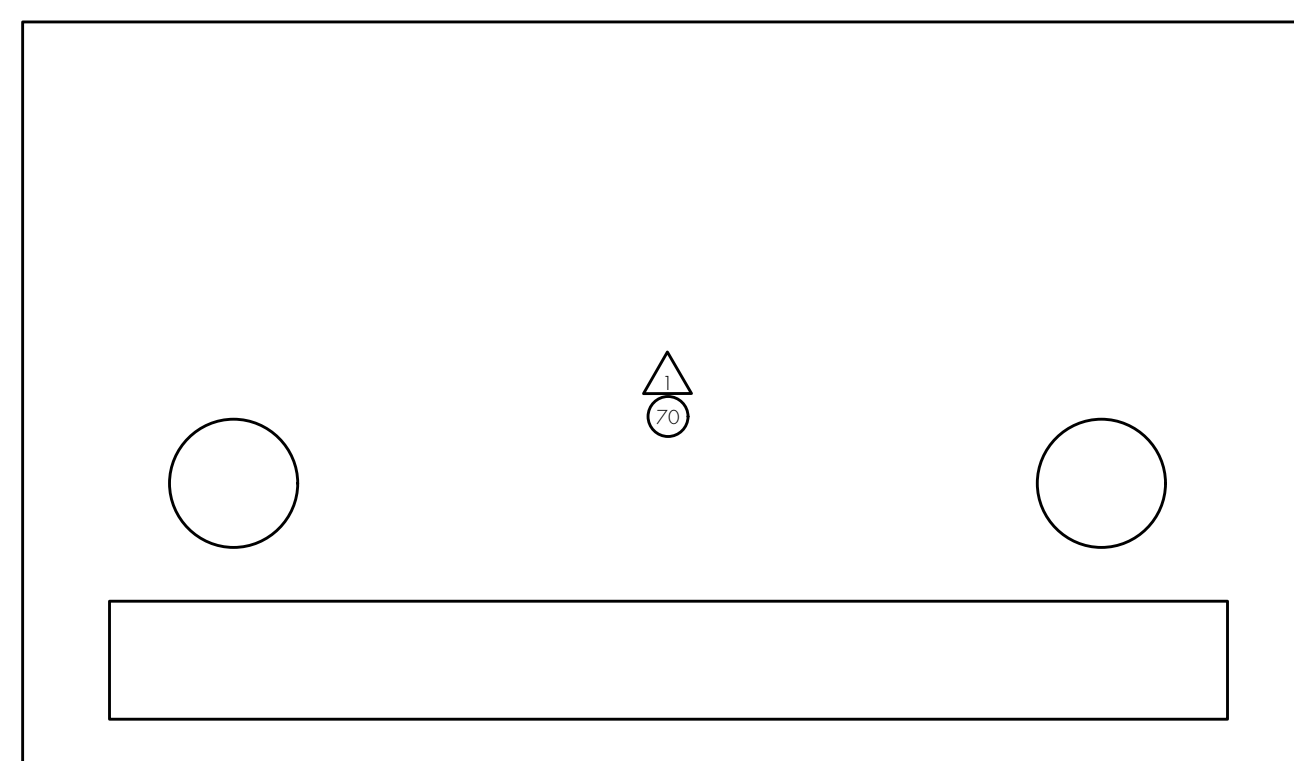
DATE: 3/9/21	3 OF 3
DRAWN: QDS	

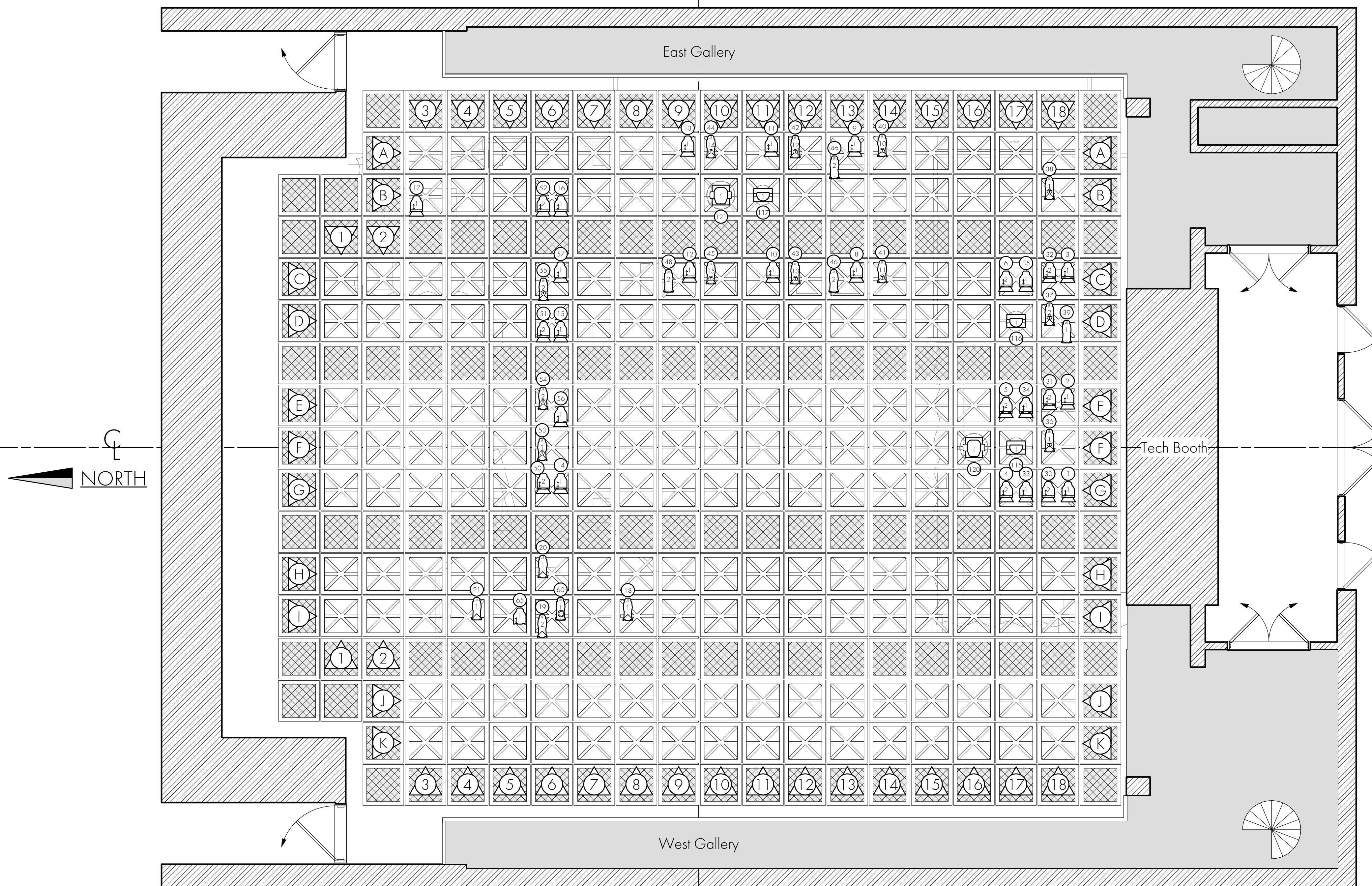
Scenic Wall J, elevation view. (1/4"=1' Scale)



Wifi Hub prop front view, not drawn to scale

Prop to be internally electrified with RGB LED's to glow. Red, and change internal color. LED's to be controllable from console. Prop must be wireless and will be carried throughout the set by participants. 3D printed prop housing to be supplied by Props. Consult designer during mockup for additional info.





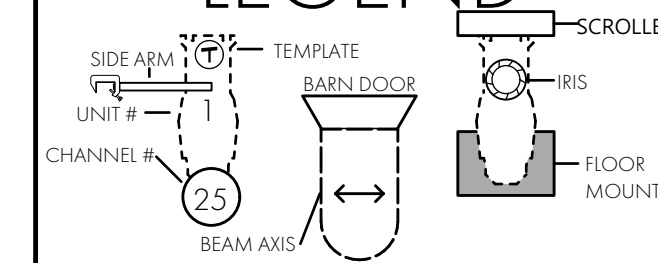
NOTES

- PROVIDE SPARE CIRCUITS AT ALL MAJOR LOCATIONS.
- DISCUSS ALL UNITS MOUNTED ON SCENERY WITH DESIGNER.
- PRE-ROTATE PAR AXES IN ORIENTATION AS SHOWN.
- NOTE CLEARANCE ON ALL AUTOMATED UNITS.
- PROVIDE EXTRA CUTS OF R132, R119, BLACKWRAP, TOP HATS, AND BARN DOORS AT FOCUS.
- USE ONLY FLOCKED TOPHATS.
- PROVIDE ADEQUATE WORK LIGHTS TO BE CONTROLLED BY STAGE MANAGEMENT.
- NO SUBSTITUTIONS WITHOUT EXPRESS DESIGNER APPROVAL.

KEY

- S4 JR 50° @ 575w
- S4 JR ZOOM @ 575w
- S4 PAR MFL @ 575w
- S4 PAR WFL @ 575w
- Chauvet Rogue R2 Wash @ 339w
- Robe ColorSpot 250 AT @ 410w
- Practical

LEGEND



DRAWING SCHEDULE

VER	DATE	DESCRIPTION
1	2/28/21	PRELIM
2	3/4/21	CUJ PRELIM
3	3/9/21	SHOP PREP
4		AS BUILT

QUINN D. SCHUSTER LIGHTING DESIGN
 909.725.0453 DESIGNER PHONE
 QUINN.D.SCHUSTER@GMAIL.COM
 quinnschuster.weebly.com

THIS DRAWING REPRESENTS VISUAL CONCEPTS AND STRUCTURAL SUGGESTIONS ONLY.
 IT DOES NOT REPLACE THE KNOWLEDGE AND ADVICE OF LICENSED STRUCTURAL ENGINEER. THE DESIGNER IS ENCOURAGED TO DETERMINE THE STRUCTURAL OR ELECTRICAL APPROPRIATENESS OF THE DESIGN AND WILL NOT ASSUME LIABILITY FOR IMPROPER ENGINEERING, CONSTRUCTION, HANDLING, OR USE OF EQUIPMENT.
 ALL MATERIALS AND CONTRUCTION MUST COMPLY WITH THE MOST STRINGENT APPLICABLE FEDERAL AND LOCAL FIRE, SAFETY, ENERGY, AND ENVIRONMENTAL CODES.

PRODUCED BY:
ILLINOIS THEATRE

DIRECTOR: AMBER SCHULTZ
 SCENERY BY: KAT BLAKESLEE
 LIGHTING BY: QUINN D. SCHUSTER
 COSTUMES BY: KELSEA ANDRADE
 SOUND BY: JODIE OLIVIA WARNER

PRODUCTION ELECTRICIAN: CONNER JONES
 TECHNICAL DIRECTOR: EMILY BAKER

THE HEIST
 A THEATRICAL ESCAPE ROOM

KRANNERT CENTER STUDIO THEATRE
 URBANA, ILLINOIS

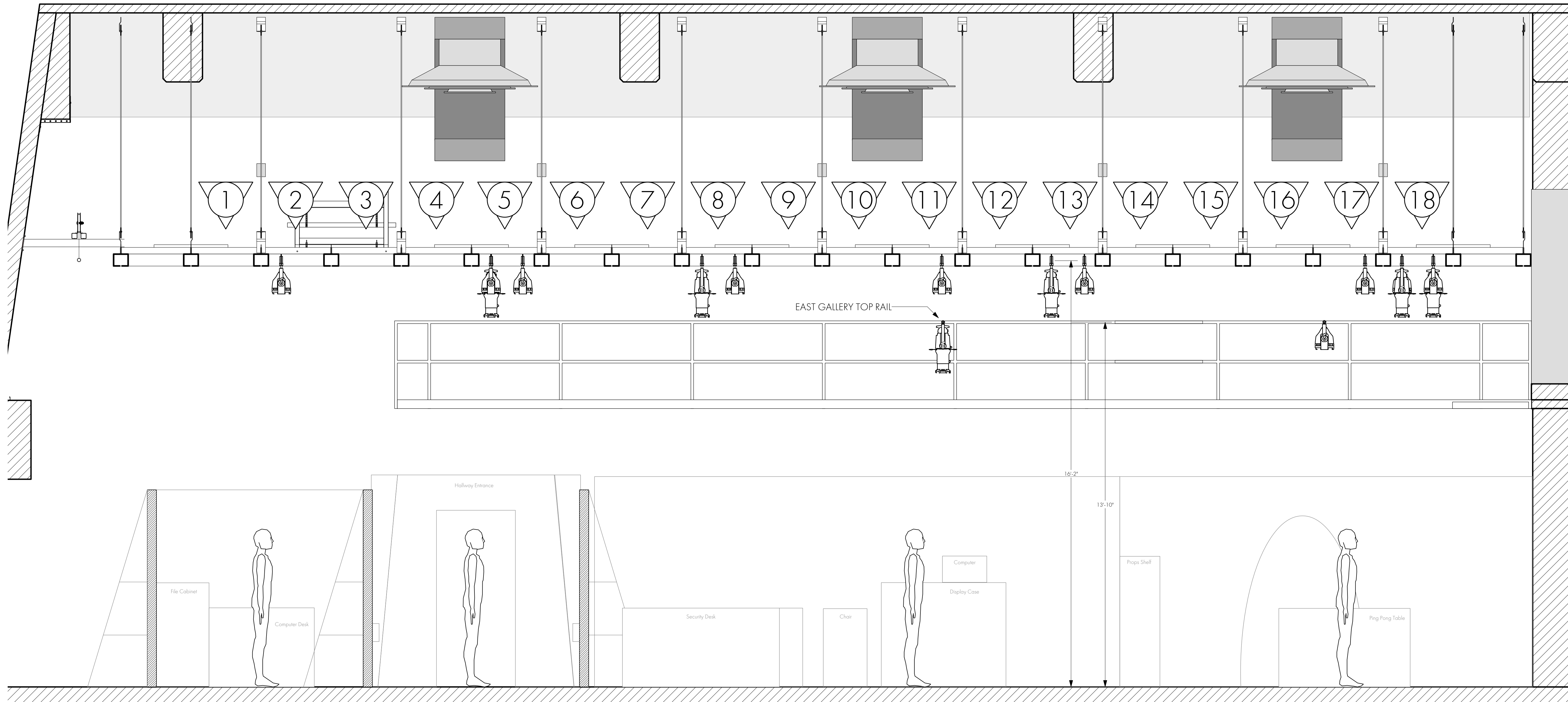
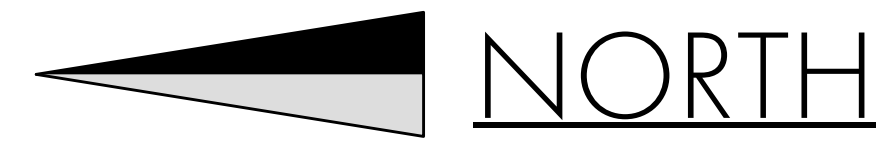
LIGHT PLOT

SCALE: 1/4" = 1' - 0" EXCEPT WHERE NOTED

DATE: 3/9/21

DRAWN: QDS

1 OF 3



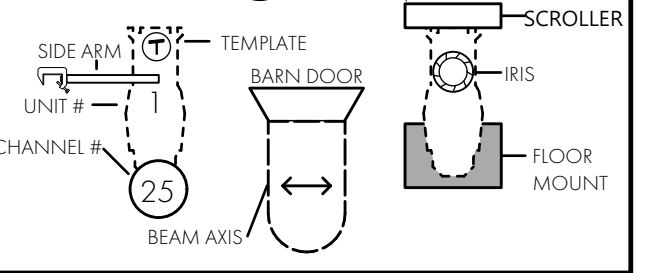
NOTES

- PROVIDE SPARE CIRCUITS AT ALL MAJOR LOCATIONS.
- DISCUSS ALL UNITS MOUNTED ON SCENERY WITH DESIGNER.
- PRE-ROTATE PAR AXES IN ORIENTATION AS SHOWN.
- NOTE CLEARANCE ON ALL AUTOMATED UNITS.
- PROVIDE EXTRA CUTS OF R132, R119, BLACKWRAP, TOP HATS, AND BARN DOORS AT FOCUS.
- USE ONLY FLOCKED TOPHATS.
- PROVIDE ADEQUATE WORK LIGHTS TO BE CONTROLLED BY STAGE MANAGEMENT.
- NO SUBSTITUTIONS WITHOUT EXPRESS DESIGNER APPROVAL.

KEY

- S4 JR 50° @ 575w
- S4 JR ZOOM @ 575w
- S4 PAR MFL @ 575w
- S4 PAR WFL @ 575w
- Chauvet Rogue R2 Wash @ 339w
- Robe ColorSpot 250 AT @ 410w
- Practical

LEGEND



DRAWING SCHEDULE

VER	DATE	DESCRIPTION
1	2/28/21	PRELIM
2	3/4/21	CUJ PRELIM
3	3/9/21	SHOP PREP
4		AS BUILT

QUINN D SCHUSTER LIGHTING DESIGN

909.725.0453 DESIGNER PHONE
 QUINN.D.SCHUSTER@GMAIL.COM
 quinnschuster.weebly.com

THIS DRAWING REPRESENTS VISUAL CONCEPTS AND STRUCTURAL SUGGESTIONS ONLY.

IT DOES NOT REPLACE THE KNOWLEDGE AND ADVICE OF LICENSED STRUCTURAL ENGINEER. THE DESIGNER IS ENCOURAGED TO DETERMINE THE STRUCTURAL OR ELECTRICAL APPROPRIATENESS OF THE DESIGN AND WILL NOT ASSUME LIABILITY FOR IMPROPER ENGINEERING, CONSTRUCTION, HANDLING, OR USE OF EQUIPMENT.
 ALL MATERIALS AND CONSTRUCTION MUST COMPLY WITH THE MOST STRINGENT APPLICABLE FEDERAL AND LOCAL FIRE, SAFETY, ENERGY, AND ENVIRONMENTAL CODES.

PRODUCED BY: ILLINOIS THEATRE

DIRECTOR: AMBER SCHULTZ
 SCENERY BY: KAT BLAKESLEE
 LIGHTING BY: QUINN D SCHUSTER
 COSTUMES BY: KELSEA ANDRADE
 SOUND BY: JODE OLIVIA WARNER
 PRODUCTION ELECTRICIAN: CONNER JONES
 TECHNICAL DIRECTOR: EMILY BAKER

THE HEIST

A THEATRICAL ESCAPE ROOM



KRANNERT CENTER STUDIO THEATRE
 URBANA ILLINOIS

SECTION

SCALE: 1/4" = 1' - 0"

EXCEPT WHERE NOTED

DATE: 3/9/21

DRAWN: QDS

2
 OF 3