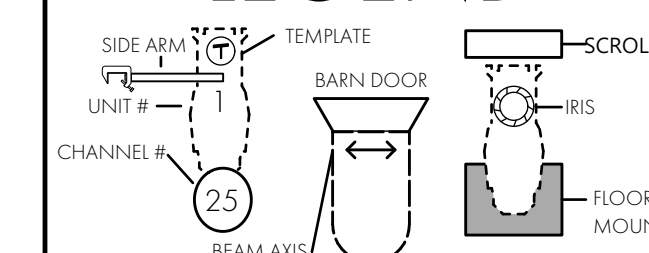


KEY

LEGEND



DRAWING SCHEDULE

VER	DATE	DESCRIPTION
1	9/22/2022	SHOP PREP
2	DATE	
3	DATE	
4	DATE	

QUINN D SCHUSTER LIGHTING DESIGN

909.725.0453 DESIGNER PHONE
QUINN.D.SCHUSTER@GMAIL.COM
quinn.d.schuster@weebly.com

THIS DRAWING REPRESENTS VISUAL CONCEPTS AND STRUCTURAL SUGGESTIONS ONLY.

IT DOES NOT REPLACE THE KNOWLEDGE AND ADVICE OF LICENSED STRUCTURAL ENGINEER. THE DESIGNER IS UNQUALIFIED TO DETERMINE THE STRUCTURAL OR ELECTRICAL APPROPRIATENESS OF THE DESIGN AND WILL NOT ASSUME LIABILITY FOR IMPROPER ENGINEERING, CONSTRUCTION, HANDLING, OR USE OF EQUIPMENT.

ALL MATERIALS AND CONSTRUCTION MUST COMPLY WITH THE MOST STRINGENT APPLICABLE FEDERAL AND LOCAL FIRE, SAFETY, ENERGY, AND ENVIRONMENTAL CODES.

PRODUCED BY: LYRIC THEATRE ILLINOIS

DIRECTOR: DAWN HARRIS
SCENERY BY: MINGHAN MA
LIGHTING BY: QUINN D SCHUSTER
COSTUMES BY: HANNAH HAVERKAMP

PRODUCTION ELECTRICIAN: NICOLE RATAJ
TECHNICAL DIRECTOR: EMILY BAKER

A LITTLE NIGHT MUSIC



TRYON FESTIVAL THEATRE
URBANA, IL

SET ELECTRICS

SCALE: 1/4"=1'-0" EXCEPT WHERE NOTED

DATE: 9/22/2022

DRAWN: QDS

6 OF 5

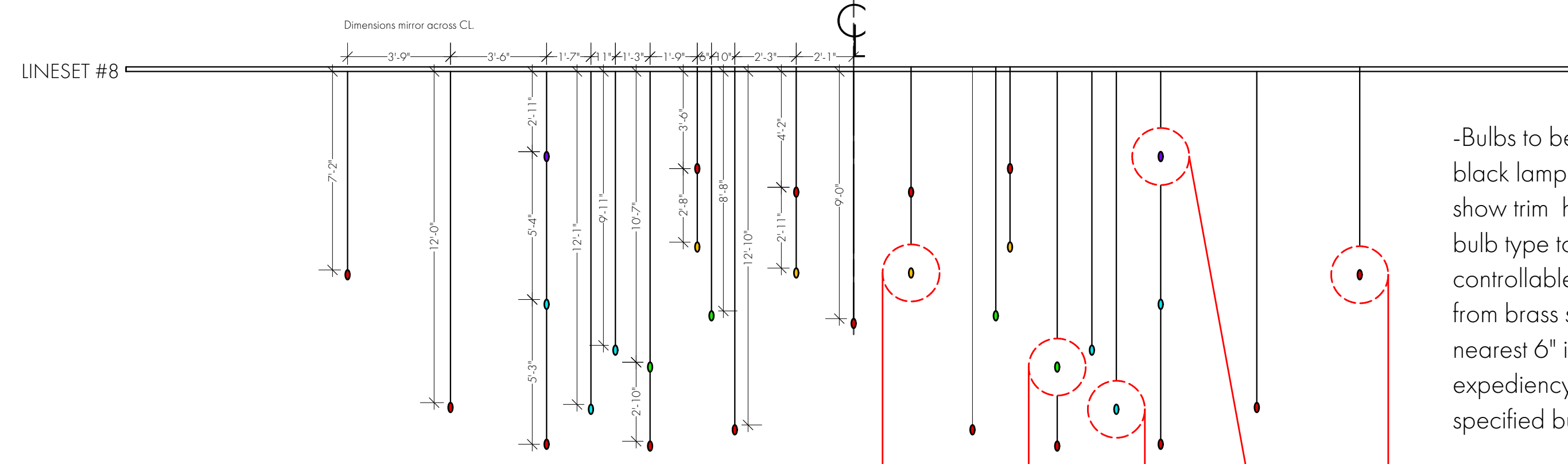
60 Watt - Victorian Bulb - 4.18 in. Length

- 3x bulbs, dimmable from 1 channel, mounted on medium base sockets behind clamshell foots on center platform.
- Bulb type: TCP (Part #: LED5G25D27KF) 40w Equivalent (4w actual) Dimmable LED 2700k frosted G25 globe, E26 socket bulb.
- Web Link: <https://www.1000bulbs.com/product/115226/TCP-5G25D27KF.html>
- Socket type: PLT Solutions (Part #: 40-0065-99) Keyless Medium Base Phenolic Socket
- Web Link: <https://www.1000bulbs.com/product/137314/SOCK-40006599.html>
- To be mounted on removable board with breakway electrical connection for removal in transitions into and out of Act 1 Scene 2. Consult designer for more detail as needed.



60 Watt - Victorian Bulb - 4.18 in. Length

- 5x individually dimmable channels of 9x bulbs to be mounted in sockets on downstage edge of US Pit Lift
- Bulb type: PLT Solutions (Part #:PLT-40028) Vintage "Victorian" E26 Base Dimmable 40w Amber Finish
- Web Link: <https://www.1000bulbs.com/product/176976/PLT-40028.html>
- Socket type: PLT Solutions (Part #: 40-0065-99) Keyless Medium Base Phenolic Socket
- Web Link: <https://www.1000bulbs.com/product/137314/SOCK-40006599.html>
- Bulbs to be powered by matte, 2 strand black lamp cord run in visually-subtle path upstage of sockets.



-Bulbs to be powered and suspended by matte, 2 strand black lamp cord upon batten to be flown in and out to show trim height specified in lineset schedule. Each light bulb type to be patched to its own individually controllable channel. 3 way turn switch to be removed from brass sockets. All dimensions only apply to the nearest 6" increment of allowable precision for load in expediency. Each colored symbol represents a different specified bulb type, below.



- Socket type: PLT Solutions (Part #80-2198) Removable Switch Medium Base Antique Dark Brass Finish Socket <https://www.1000bulbs.com/product/172092/CL-10023.html>
- Bulb type: PLT Solutions (Part #:PLT-40003) Vintage "Edison" E26 Base Dimmable 40w Amber Finish <https://www.1000bulbs.com/product/171947/P-171947.html>
- Bulb type: PLT Solutions (Part #:PLT-40024) Vintage "Tubular" E26 Base Dimmable 40w Amber Finish <https://www.1000bulbs.com/product/171970/P-171970.html>
- Bulb type: PLT Solutions (Part #:PLT-40037) Vintage "Large Globe" E26 Base Dimmable 40w Amber Finish <https://www.1000bulbs.com/product/177135/P-177135.html>
- Bulb type: Bulbrite (Part #:132518) Vintage "Gem" E26 Base Dimmable 40w Amber Finish <https://www.1000bulbs.com/product/173879/BULBRI-10005.html>
- Bulb type: PLT Solutions (Part #:PLT-40011) Vintage "Medium Globe" E26 Base Dimmable 40w Amber Finish <https://www.1000bulbs.com/product/171957/P-171957.html>

NOTES:

- ALL UNITS HUNG ON 1'-6" CENTERS UNLESS OTHERWISE NOTED.
- PROVIDE SPARE CIRCUITS AT ALL MAJOR LOCATIONS.
- DISCUSS ALL UNITS MOUNTED ON SCENERY WITH DESIGNER.
- HANG ALL UNITS AND PRE-ROTATE PAR AXES IN ORIENTATION AS SHOWN.
- HANG ALL FRESNELS PREFOCUSED TO FULL SPOT.
- NOTE CLEARANCE ON ALL AUTOMATED UNITS.
- ALL ELECTRIC TRIMS TAKEN FROM SHOW DECK.
- ALL BORDER TRIMS ARE TAKEN FROM SHOW DECK TO BOTTOM OF GOODS.
- ALL TRIMS ARE SUBJECT TO CHANGE IN THE THEATRE.
- BOOM MEASUREMENTS ARE TAKEN TO THE BOOM PIPE. NOT THE INSTRUMENTS.
- VERIFY ALL BOOM PLACEMENTS BEFORE DEADING OFF.
- ALL BOOMS SHOULD BE RIGID AND SECURE.
- PROVIDE EXTRA CUTS OF R132, R119, BLACKWRAP, TOP HATS, AND BARN DOORS AT FOCUS.